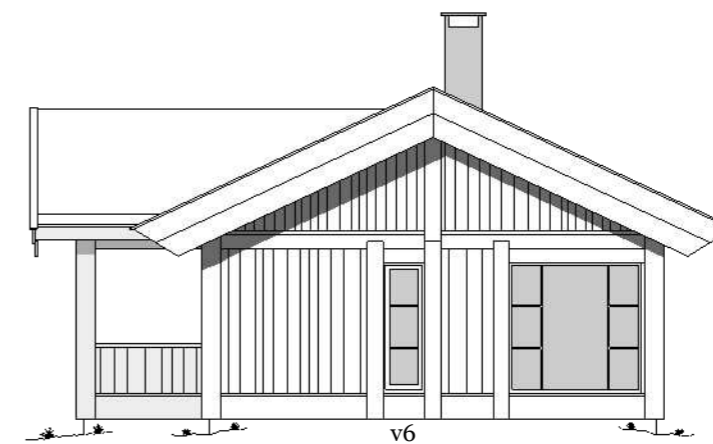
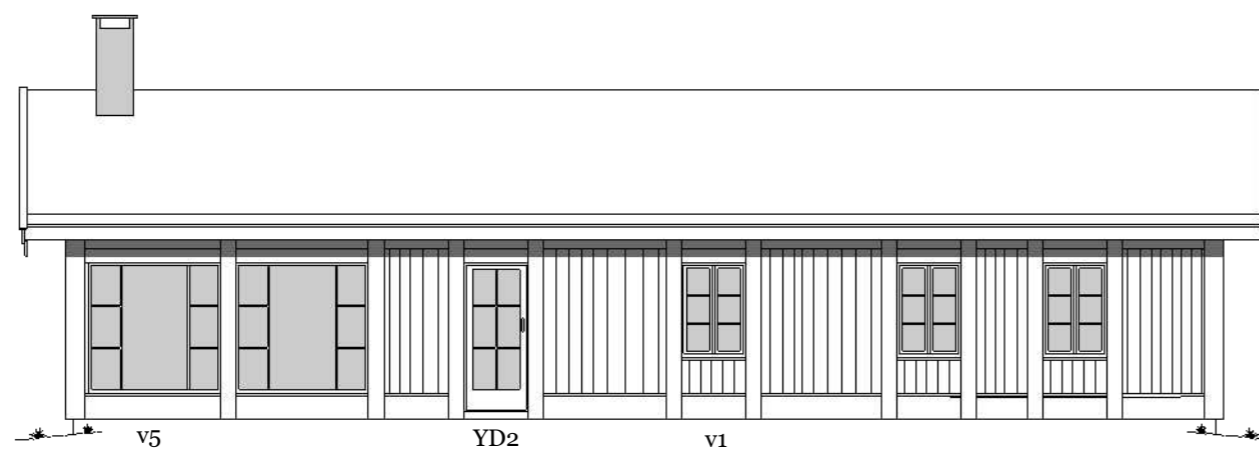


YD1 = 89x199
 YD2 = 89x199
 v1 = 89x129
 v2 = 47x129
 v3 = 47x92
 v4 = 89x92
 v5 = 179x176
 v6 = 59x176



BRA = 80 kvm
 BYA = 99 kvm
 Takvinkel = 25 gr.
 Mønehøyde = 4,6m
 Gesimshøyde = 3,2m

HYTTEMODELLE GÅLÅ 80
 MÅLESTOKK 1:100



(c) SKÅBU TRADISJONSBYGG AS

REVISIONS		
DD/MM/YY	REMARKS	
1	29/01/21	PHV
2	---/---/---	...
3	---/---/---	...
4	---/---/---	...
5	---/---/---	...

A 01